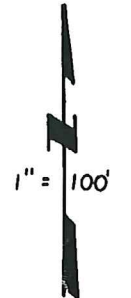
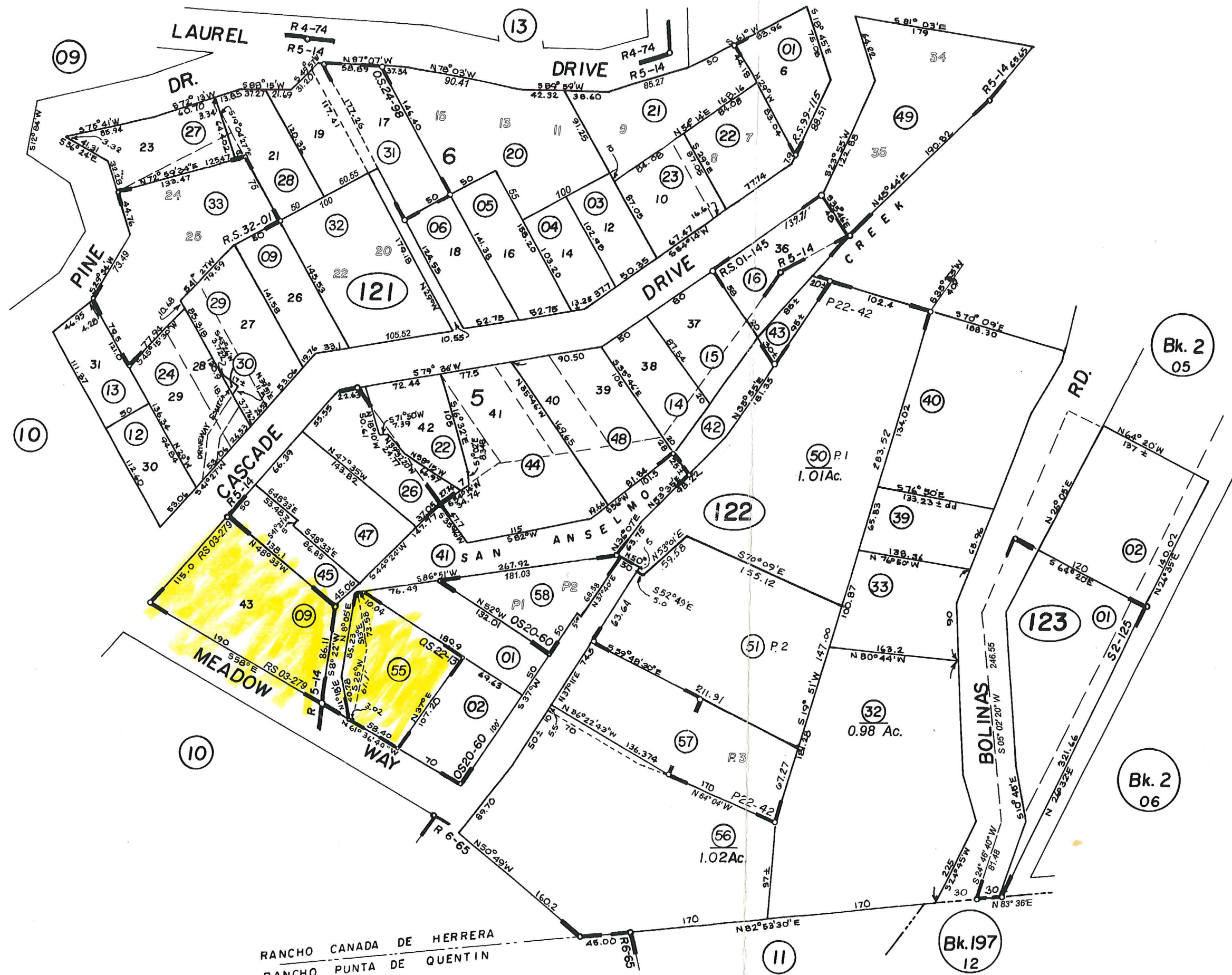


7/31/2012 MEM

CHANGES				
BLK	PRIOR APN	NEW APN	YR	AUTH
101	SURVEYS		04	
			09	
101	003-101-04	NOTM	12	
101	003-101-10	NOTM	12	
101	01 & 02	003-101-33	12	250 NOTM
101	12, 15, 29, 30	003-101-34	12	250 NOTM
080	197-080-04	003-102-34	13	016 Reblocked
102	03 & 34	003-102-35	13	016 NOTM

THIS MAP WAS PREPARED FOR ASSESSMENT PURPOSES ONLY. NO LIABILITY IS ASSUMED FOR THE ACCURACY OF THE DATA SHOWN. ASSESSOR'S PARCELS MAY NOT COMPLY WITH LOCAL SUBDIVISION OR BUILDING ORDINANCES.

THIS MAP IS PREPARED FOR ASSESSMENT PURPOSES ONLY. NO LIABILITY IS ASSUMED FOR THE ACCURACY OF THE DATA SHOWN. ASSESSOR'S PARCELS MAY NOT COMPLY WITH LOCAL SUBDIVISION BUILDING ORDINANCES.



5/24/2012 MEM

CHANGES

BLK	PRIOR APN	NEW APN	YR	AUTH
122	SURVEYS		04	
121	003-121-20	NOTM	06	
122	29 & 52	003-122-57	09	132 NOTM
			09	
121	07,08	32	11	154 NOTM
122	53,54	58	11	154 NOTM
122	49	NOTM	.11	
121	003-121-21	NOTM	12	
121	003-121-21	NOTM	12	
121	25 & 26	003-121-33	12	253 NOTM

R.M. Bk.5-Pg.14, Amended Map No. 2, Cascades

NOTE - Assessor's Block Numbers Shown in Ellipses.
Assessor's Parcel Numbers Shown in Circles